

Hydra-Tapper[®]

Hydra-Stop's revolutionary, lightweight tapping machine makes efficient line taps on water and wastewater lines. The Hydra-Tapper tapping machine makes it easy to turn an inexperienced worker into a professional line tapper.

FEATURES, BENEFITS & APPLICATIONS

FEATURES

- Rated at 250 psi (17 bar)*
- Handles taps 4" – 20" (100mm - 500mm) on cast iron, ductile iron, steel, asbestos cement, concrete and PVC pipe
- Flexibility to work with any tapping valve
- Lightweight, yet rugged construction
- Compatible with mechanical joint and flange to flange connections
- Fewer moving parts compared to other tapping machines
- Optional air or hydraulic drive available
- Convertible to valve insertion machine

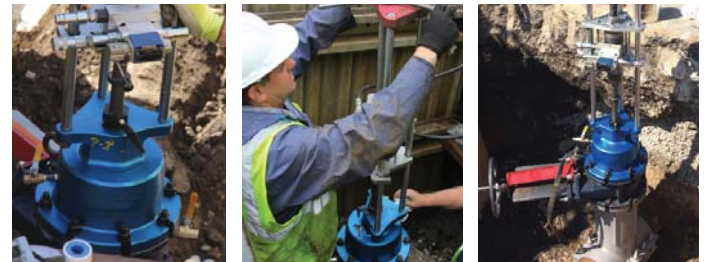
*4-12" rated to 250 psi (17 bar), 14-20" rated to 150 psi (10 bar)

BENEFITS

- Minimizes service disruption by avoiding system shutdown
- Fast, safe and accurate line taps
- Lowers the cost of system maintenance
- Reduces costly and disruptive breakdowns due to fewer moving parts
- Maneuverable due to light machine weight
- Easily performs valve insertions, line stops and side taps due to modular design

APPLICATIONS

- Installing an insertion valve or performing a linestop
- Making branch connections onto an existing line
- Taps for inspection devices such as CCTV or leak detection



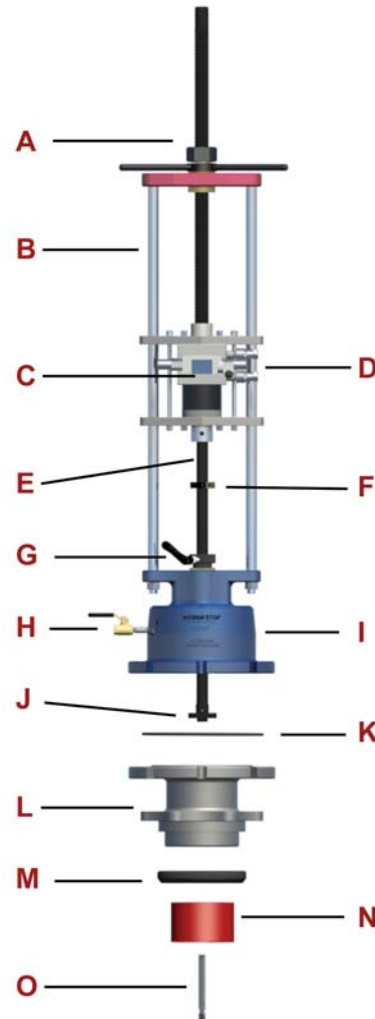
Hydra-Tapper® Tapping Machine

HYDRA-TAPPER BASE TAPPING MACHINE

- A. OS&Y Rising Stem Assembly
- B. Guide Bars (3)
- C. Standard Air or Hydraulic Drive
- D. Hydraulic Quick Connectors
- E. Saw Mandrel
- F. Adjustable Stop Collar
- G. Packing Nut & Mandrel Locking Screw
- H. 1/4" Ball Valve
- I. Machined Tap Housing
- J. Cutter Mounting Flange
- K. "O" Ring Seal (Fits all Adapters)
- L. Tapping Adapter (M.J. Shown)
- M. Tapping Adapter Seal
- N. Shell Cutter
- O. Pilot Drill

Hydra-Stop has a full range of tapping adapters: M.J., ANSI 150, NP16, Korean, Australian. All inch dimensions referred to are nominal pipe diameters per industry standards.

Regardless of what type of Hydra-Stop equipment you currently own, you can easily convert to Hydra-Stopper, Insta-Valve 250, or Hydra-Tapper equipment. Adapter kits may be required.



HOW IT WORKS

The Hydra-Tapper provides access to pressurized pipe without disrupting pressure or service.

1. Obtain a tapping sleeve and a tapping valve that are capable of retaining the internal pressure of the water main.
2. Install the sleeve around the water main.
3. Attach the tapping valve to the sleeve.
4. Perform the tap through the tapping valve.



144 Tower Drive : P: (800) 538-7867
Suite A : F: (708) 389-5125
Burr Ridge, IL 60527 : www.hydra-stop.com



© 2018 Hydra-Stop. All Rights Reserved.
Information subject to change without notice.